



Kansas Health Foundation

Integrated Voter Engagement Initiative: Health Depends on a Vibrant Democracy

RFP Information Session

Today's Presenters

- **Elina Alterman**
 - KHF, Program Officer
- **Carla Gibson**
 - REACH, Senior Program Officer
- **Dawn Downes**
 - REACH, Senior Program Officer
- **Jessica Hembree**
 - HCF, Program & Policy Officer



RFP Meeting Purpose

- Describe the IVE initiative
- Provide overview of application process
- Answer questions



KHF Strategic Focus Areas

The Kansas Health Foundation envisions a culture in which every Kansan can make healthy choices where they live, work, and play.

Reduce health disparities related to social and economic factors (health equity)

Social Determinants of Health

Prevention

Access to Care

Engage Kansans to improve the health of our state (civic health)

Actionable Data

Media and Journalism

Leadership and Capacity Building

We accomplish our vision through grantmaking, policy advocacy, and strategic communication.



REACH Health Care Foundation

VISION

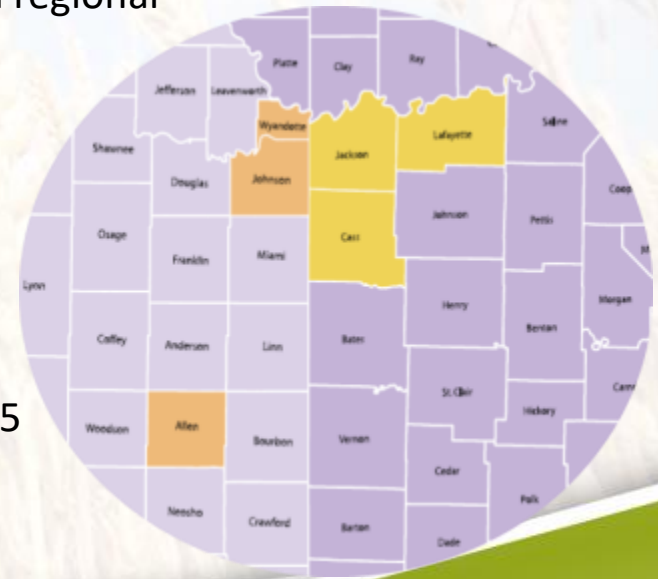
All poor and underserved people in our community will have quality health care.

MISSION

- To advance equity in health care coverage, access & quality for poor and underserved people.

REACH AT A GLANCE

- Established in 2003 with money resulting from the sale of a regional nonprofit health care and hospital system
- Governed by a 17-member Board of Directors
- Service area encompasses Kansas and Missouri:
 - Allen, Johnson** and **Wyandotte** counties in Kansas
 - Cass, Jackson** and **Lafayette** counties in Missouri,
 - and the City of Kansas City, Missouri.
- \$4.4 million invested in grants in 2016
- \$52.3 million invested in programs and initiatives since 2005
- Assets: \$125.8 million as of December 31, 2016



Health Care Foundation of Greater KC

Our mission is to provide:



LEADERSHIP



ADVOCACY



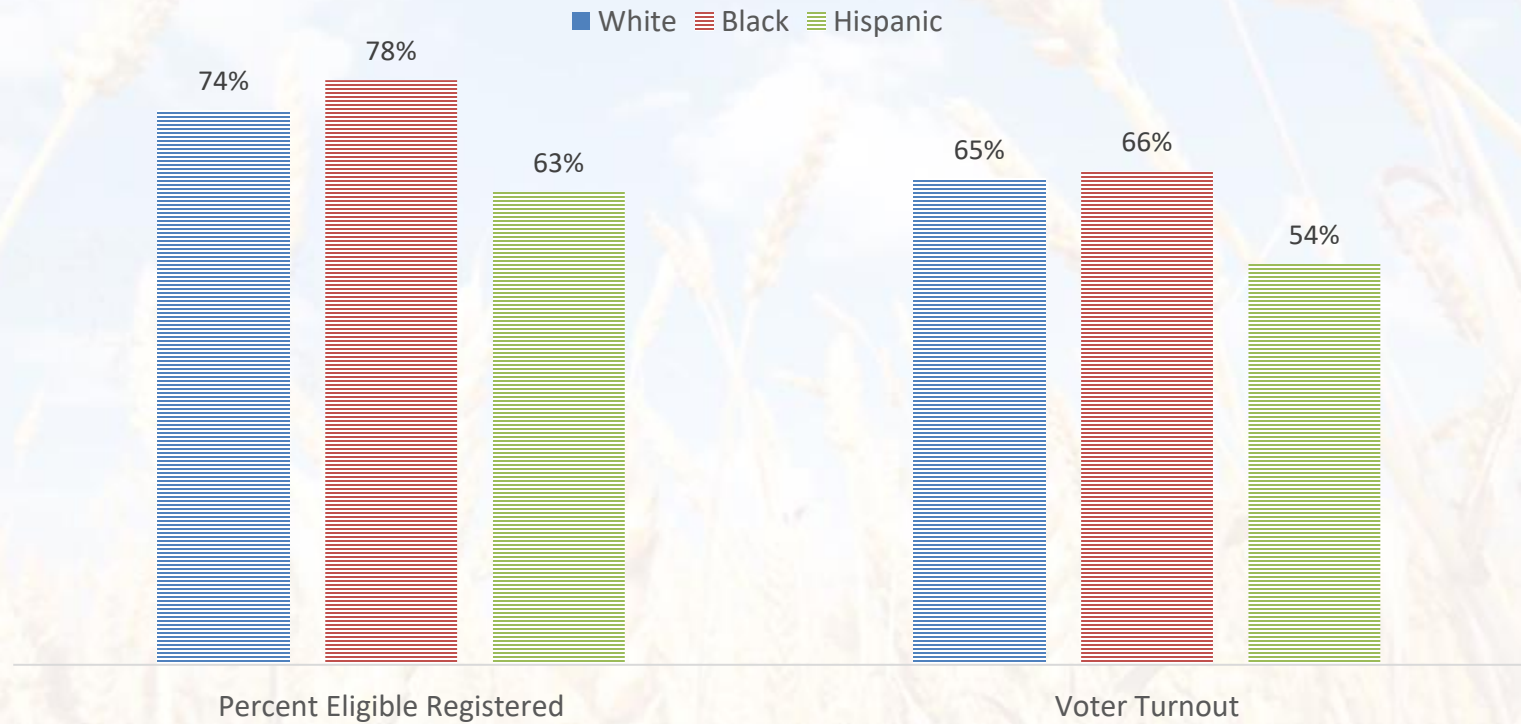
RESOURCES



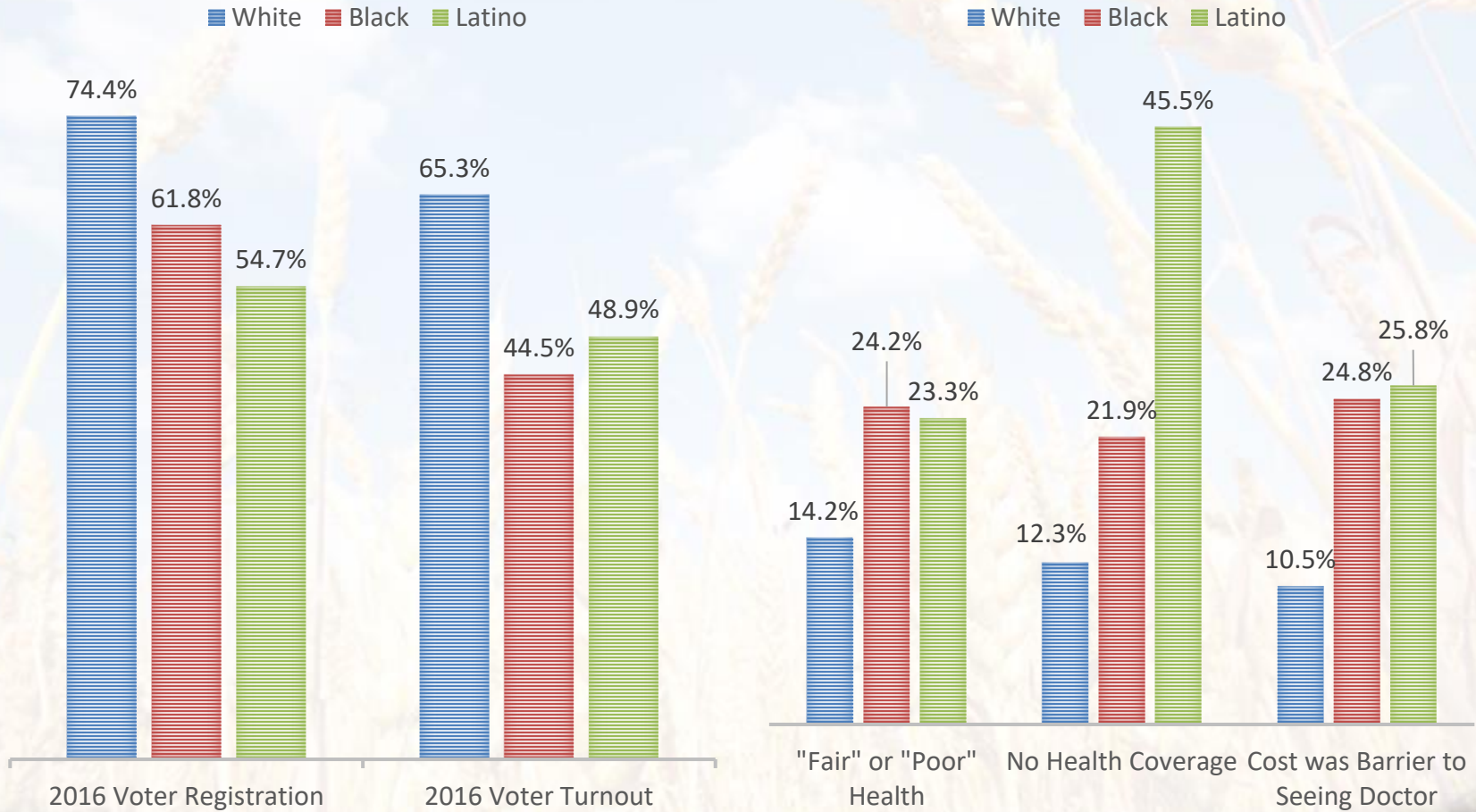
- The HCF service area includes: Cass, Jackson, and Lafayette Counties in Missouri; Kansas City, MO; and Allen, Johnson, and Wyandotte Counties in Kansas.



Voting Disparities in Missouri



Health and Voting Disparities in Kansas

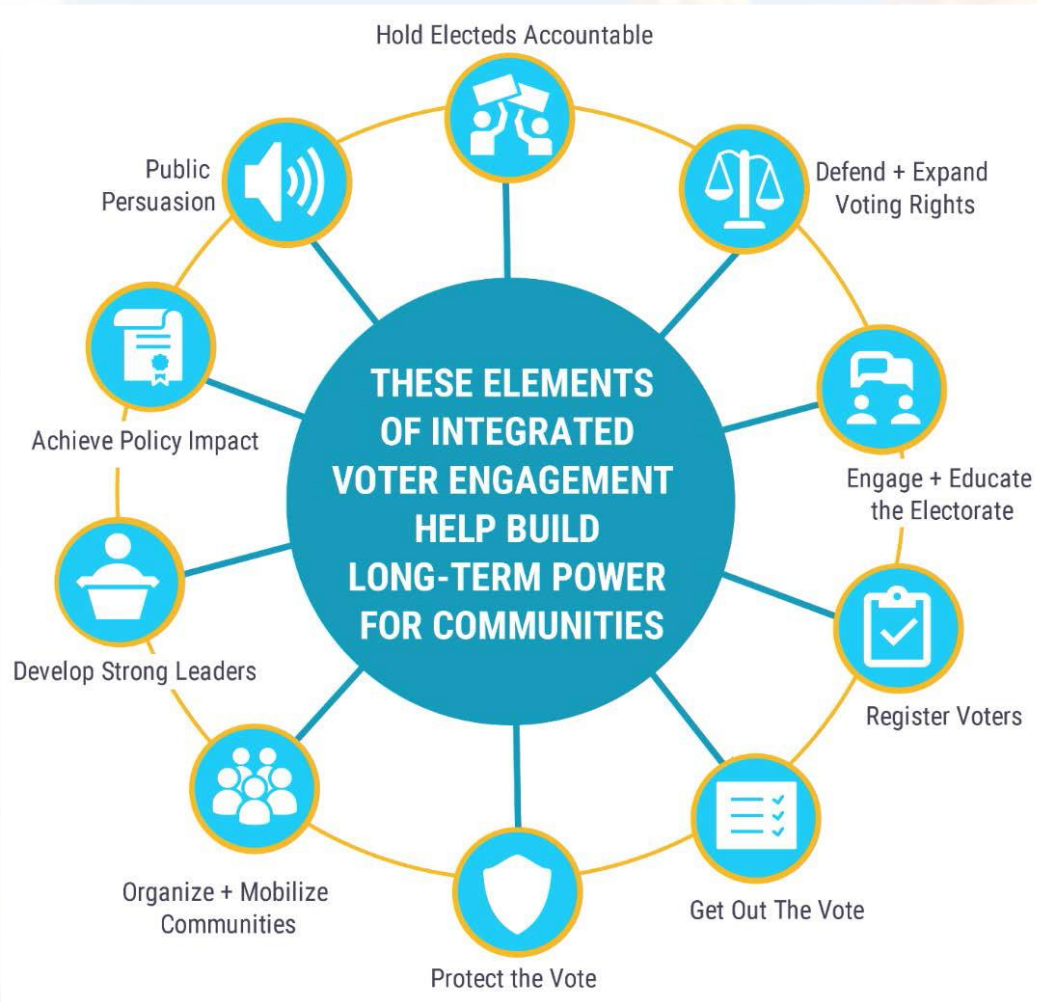


IVE Vision

- We believe that greater civic engagement from populations most affected by health and voting disparities can lead to public policies that reduce those disparities and improve health outcomes for all Kansans.
- We envision an environment in which organizations incorporate year-round, non-partisan Integrated Voter Engagement into their existing health equity work with the goals of increasing voter registration and turnout in state, national, and local elections as well as ensuring that communities and individuals participate in the processes of democracy in-between elections.



Integrated Voter Engagement



Available Funding and Grant Period

- Up to ten grantees
- Available funding:
 - \$225,000 maximum total award amount
 - \$75,000 maximum annual award amount
- Grant period:
 - Three year funding term
 - Begins December 1, 2017 and ends November 30, 2020
- Technical assistance funds:
 - \$50,000 set aside for grantee IVE technical assistance



Initiative Objectives

- Grantees create an infrastructure that integrates ongoing, year-round voter registration, education, and mobilization efforts into health equity issue work;
- Grantees work to mobilize and bring into the fold populations that are new to the political process, historically underrepresented, and affected by health disparities;
- Grantees seek out and develop trusted leaders drawn from the very communities they will work to mobilize;
- Grantees develop stronger organizational capacity to do IVE work; and
- Grantees develop stronger relationships with one another and the three foundations.



Applicants Must Identify and Describe

- Health equity issues working on (including relevant systems and policies)
- How will incorporate year-round, non-partisan IVE into existing efforts
- Determine geographic scope, including compelling and data-driving description, including:
 - Eligible voters
 - Registered voters
 - Voting age population
 - Pertinent area demographics
- Populations targeted and engaged
 - Health disparities experienced
 - Voter registration and turnout disparities



Who May Apply

- Eligible applicants must:
 - Be tax exempt 501(c)3 organizations;
 - Have the primary purpose of supporting, promoting, or furthering the improvement of health;
 - Demonstrate credibility in the area in which they propose to work; and
 - Serve the areas funded by KHF, HCF, and REACH (the state of Kansas and the following geographies in Missouri: Cass County, Jackson County, Kansas City, MO and Lafayette County).



Funding Determinations

- Grants will be awarded to organizations whose proposals demonstrate the following:
 - Representation of a population disproportionately affected by health disparities;
 - Experience in mobilizing network/coalition members and organizations to accelerate change;
 - Experience in utilizing advocacy and/or grassroots organizing to affect change;
 - Collaboration with other organizations in the implementation of grant activities; and
 - Experience in building or being a part of a collaborative network or coalition.



Grant Exclusions

- Construction projects of any kind;
- Medical research;
- Contributions to capital campaigns;
- Operating deficits or retirement of debt;
- Endowment programs not initiated by HCFGKC, KHF, or REACH;
- Vehicles, such as vans or buses;
- Medical equipment;
- Real estate acquisitions;
- Direct mental health services;
- Direct medical services;
- **Partisan political activity;**
- **Candidate endorsements; and**
- **Lobbying as defined by the U.S. Internal Revenue Code (IRC), section 4945(d)(1).**



Meeting and Reporting Requirements

- Grantees will spend up to two days in Wichita for a cohort retreat at beginning of grant term
 - Two staff members from each grantee organization
- Grantees will convene as a cohort three additional times over the course of grant period
 - Once more in person
 - Twice virtually
- Grantees will participate in quarterly progress update check-ins with program officers



Timeline

Proposals Due	September 7, 2017 by 5 PM CST
Grant Awards Announced	Week of October 23-27, 2017
Grant Term Begins	December 1, 2017
Final Grant Term Ends	November 30, 2020



Proposal Requirements and Scoring

Proposal Section	Maximum Score	Page Limit
Executive Summary	Not Scored	1
Applicant Capacity and Experience	10	4
Issue Area	10	3
Vision for Integrated Voter Engagement	15	8
Proposal Objectives	5	N/A
Budget	5	N/A
Total	45	16 pgs + Objectives and Budget sections and Letters of Support



For More Information

- RFP website: <http://kansashealth.org/grant-opportunities/IVE/>
 - Includes pre-recorded webinar, links to required attachments, and list of FAQs.
- Programmatic questions, email Elina Alterman ealterman@khf.org
- Questions regarding online application process, email Gina Hess gness@khf.org

